

# National Chapter Survey Results

2016-2017

# snapshot of the Movement

## reporting institutions

total survey respondents: 167 (80% of Break Away chapters with programs)

### attributes

Public	101 (60%)
Private	66 (40%)
Liberal arts	54 (32%)
Research	52 (31%)
Four-year	162 (97%)
Two-year	5 (3%)

### affiliations

Multi-Campus	28 (17%)
Religious	19 (11%)
Other*	12 (7%)

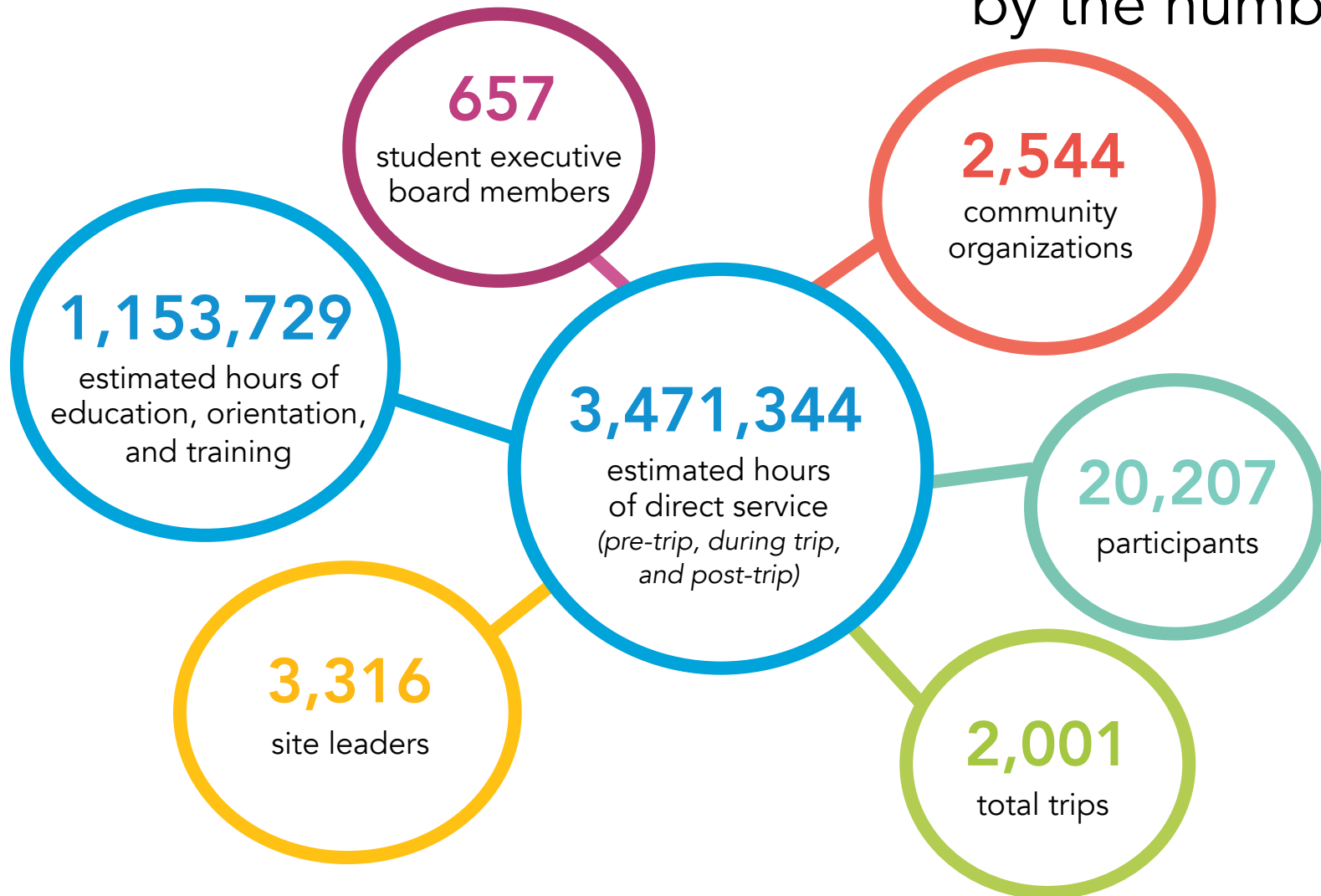
### Break Away membership

Advantage	85 (51%)
Associate	82 (49%)

\*HBCU, HIS, AANAPISI, MSI, Land Grant, Engineering, Majority Commuter, Women's Institution, Co-op

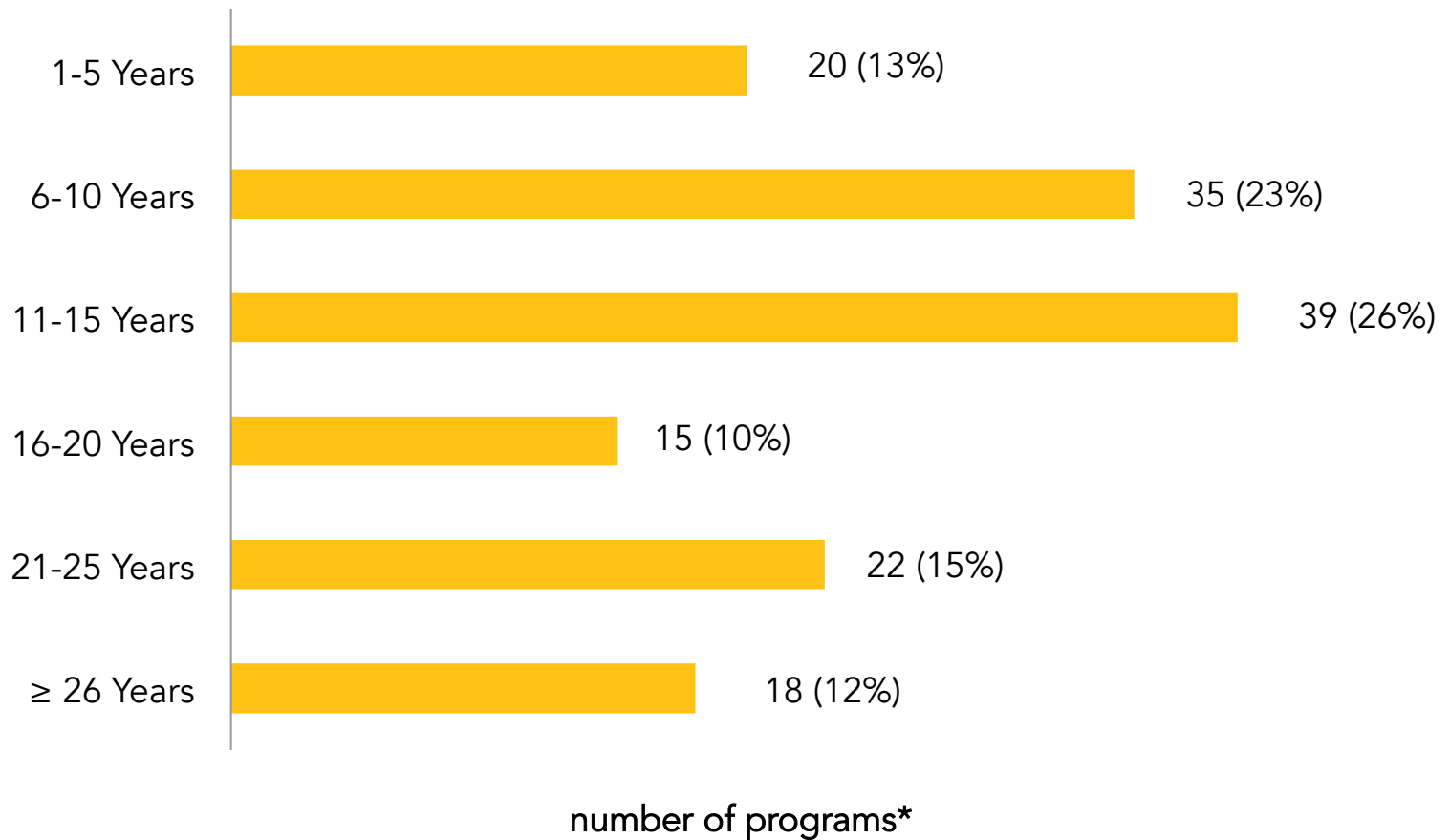
# snapshot of the Movement

by the numbers



# snapshot of the Movement

## age of alternative break programs



\*149 programs reported

# snapshot of the Movement

number of trips by *season*

2,001

total trips

**international** | 205 trips (10%)

---

**Spring** | 96 trips

**Summer** | 45 trips

**Fall** | 1 trip

**Winter** | 63 trips

**domestic** | 1,796 trips (90%)

---

**Spring** | 1,027 trips

**Summer** | 95 trips

**Fall** | 185 trips

**Winter** | 314 trips

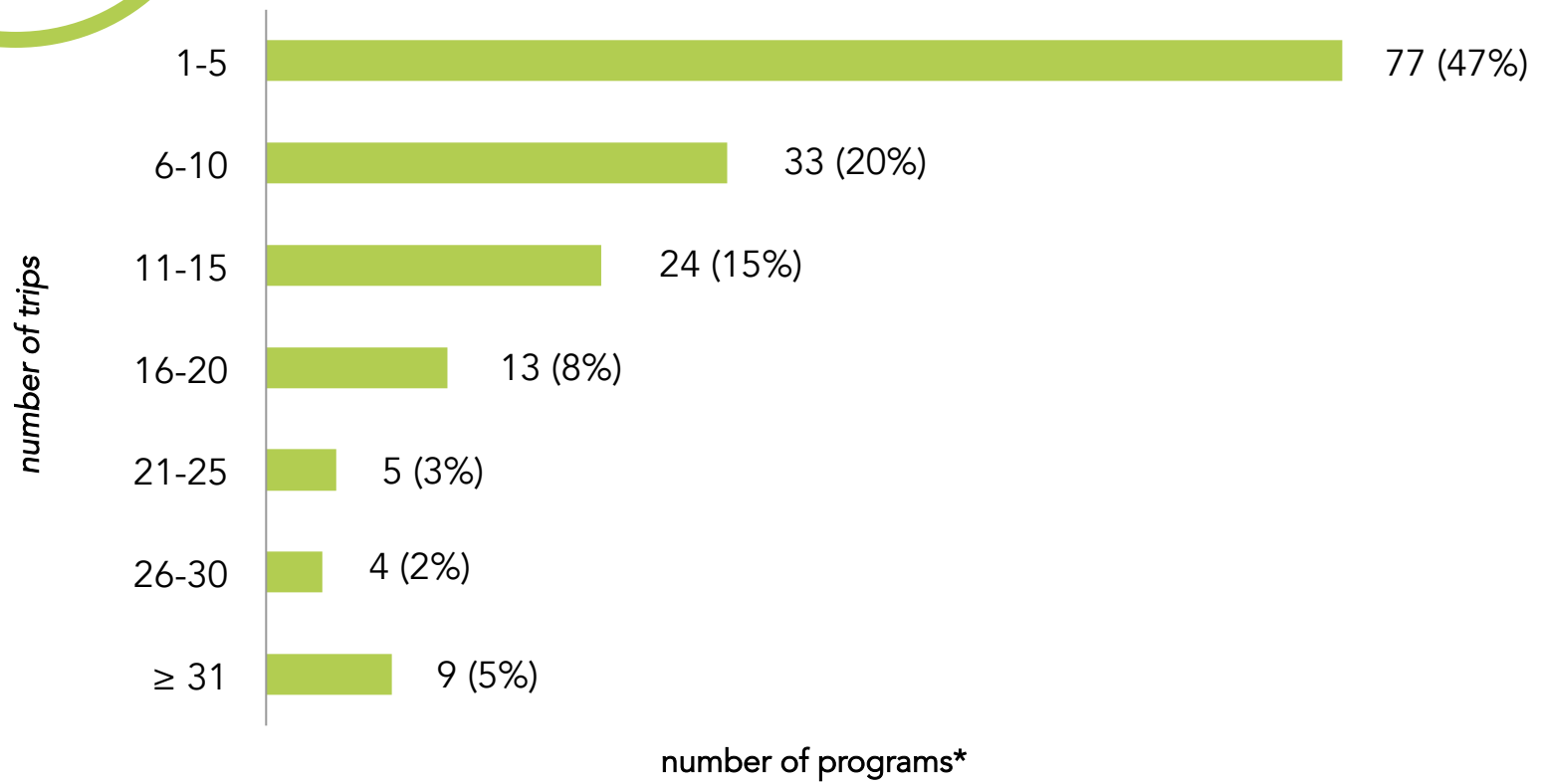
**Weekend** | 175 trips

*\*165 programs reported*

# snapshot of the Movement

number of trips by *program*

2,001  
total trips



\*165 programs reported

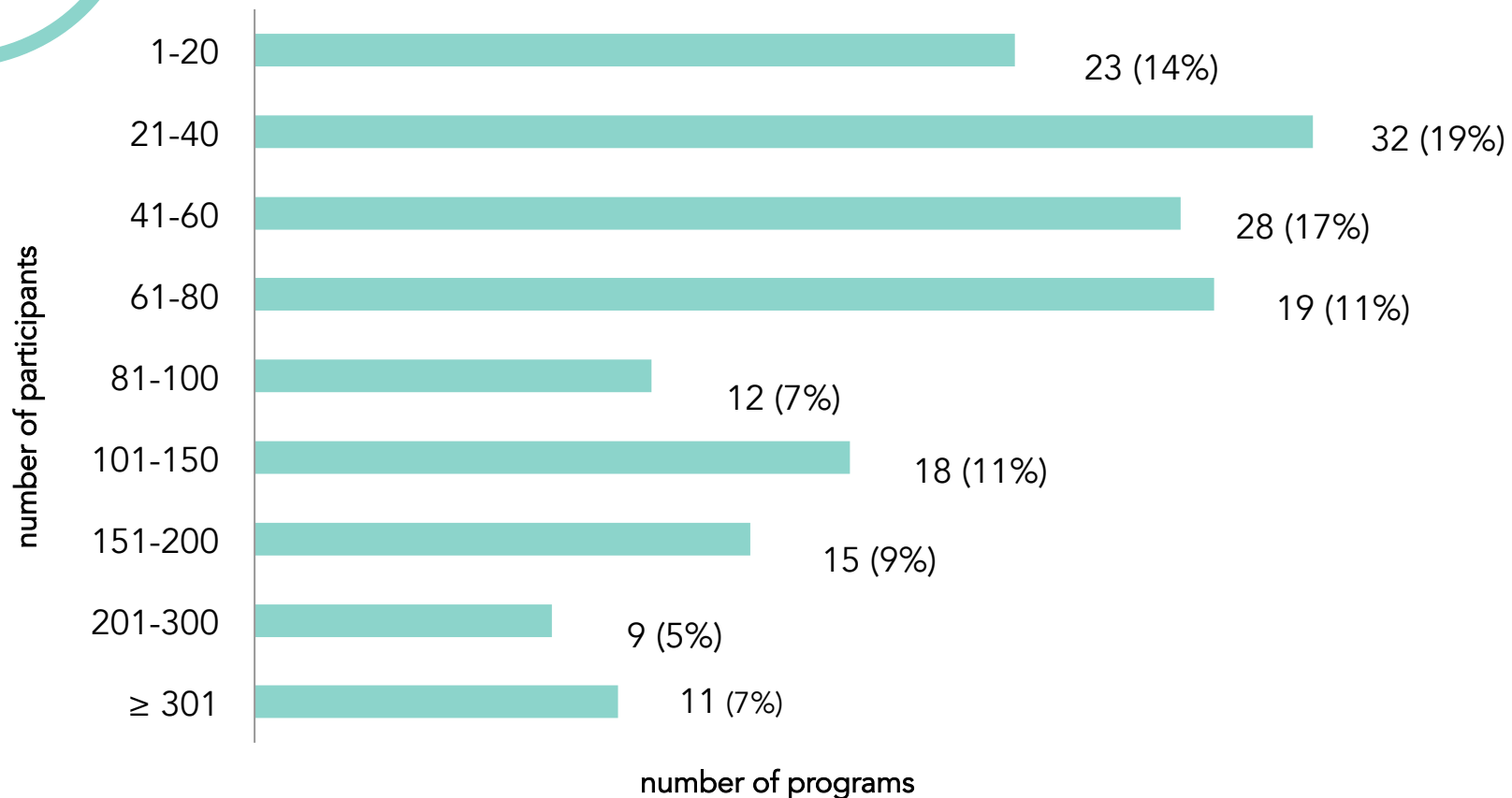
# snapshot of the Movement

number of participants by *program*

20,207

participants

average number of participants per trip: 10

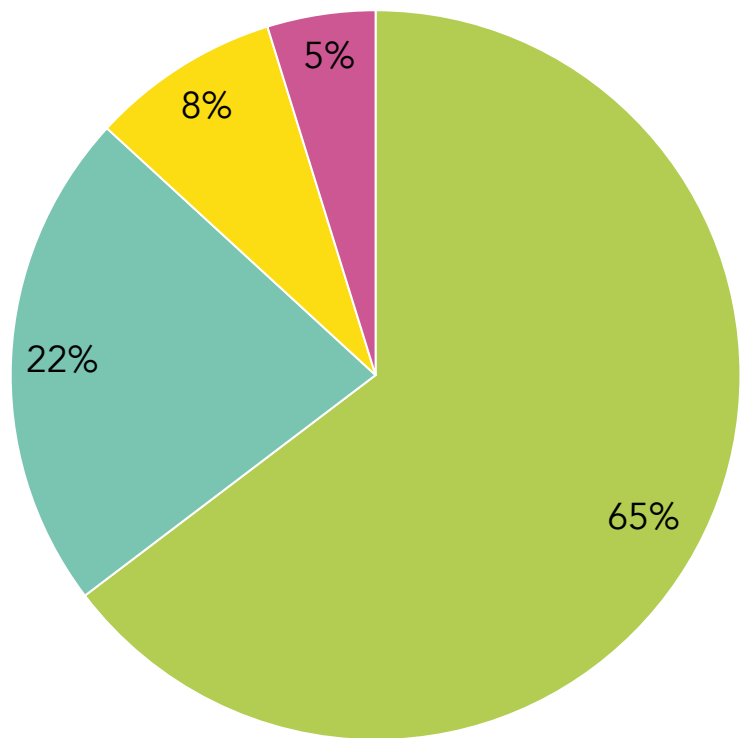


# community partnerships

## community organization relationships

returning community partnerships: 1,345 (53%)

**2,544**  
community  
organization partners



- Strive to work with a balance of "return" community organizations and new community organizations. (65%)
- Actively pursue long-term relationships with community organizations. (22%)
- Actively pursue new community organization relationships from year to year. (8%)
- No response. (5%)



# trip focus areas

top ten

- 1 Environment
- 2 Housing & Homelessness
- 3 Education
- 4 Food & Hunger
- 5 Health (HIV/AIDS, mental health, addiction, public health)
- 6 Youth Development
- 7 Disaster Recovery & Rebuilding
- 8 Animal Welfare
- 9 Immigration & Refugee Resettlement
- 10 Community Organizing

# trip focus areas

## innovative trips + powerful titles

Gettysburg College

**Black Lives Matter and the Civil Rights Movement**

---

New York University

**Charting Change: Conservation in the Face of Climate Change**

---

University of Idaho

**Cultivating Empathy and Embracing Diversity through Refugee Resettlement**

---

Rice University

**From Communities to Clinics: How Your Zip Code Determines Your Health**

---

American University

**Ghosts of War: Post-conflict Recovery Four Decades Later**

---

Oregon State University

**Native Voices: Exploring Cultural Engagement, Policy Issues, and Community Wellbeing**

---

University of California, San Diego

**Pride, Power, and Progress: LGBTQ Rights Beyond Marriage Equality**

---

Baldwin Wallace University

**Tangled Roots: History, Land Use, & Cultural Engagement**

---

Hamline University

**Then and Now: Queer & Trans Poverty, Gentrification, and Assimilation**

---

# student leadership participant selection

20,207

participants

## selections process

Application only	64 (38%)
Written application, personal interview	38 (23%)
Written application, group interview	11 (7%)
Written application, personal interview, group interview	6 (3%)
Sign up: first come, first served	14 (9%)
Lottery system	6 (3%)
Varies by program and/or trip	25 (15%)
No response	3 (2%)

*111 (66%) programs offer full/partial scholarships to participants*

faculty + staff role on trips  
select all that apply

Crisis management/emergency: alcohol, personal safety	127 (76%)
Mentor/support for student leaders	106 (63%)
Van drivers	105 (63%)
Money handlers	103 (62%)
Full participants - no extra or special responsibilities	38 (23%)
Issue-specific educators	36 (22%)
Reflection facilitators	36 (22%)
Logistics/schedule managers	31 (19%)
Trip leaders (with or without the help of student co-leader)	28 (17%)
Other*	5 (3%)

# staff + faculty

## roles of trip advisors

are faculty and/or staff required on trips?

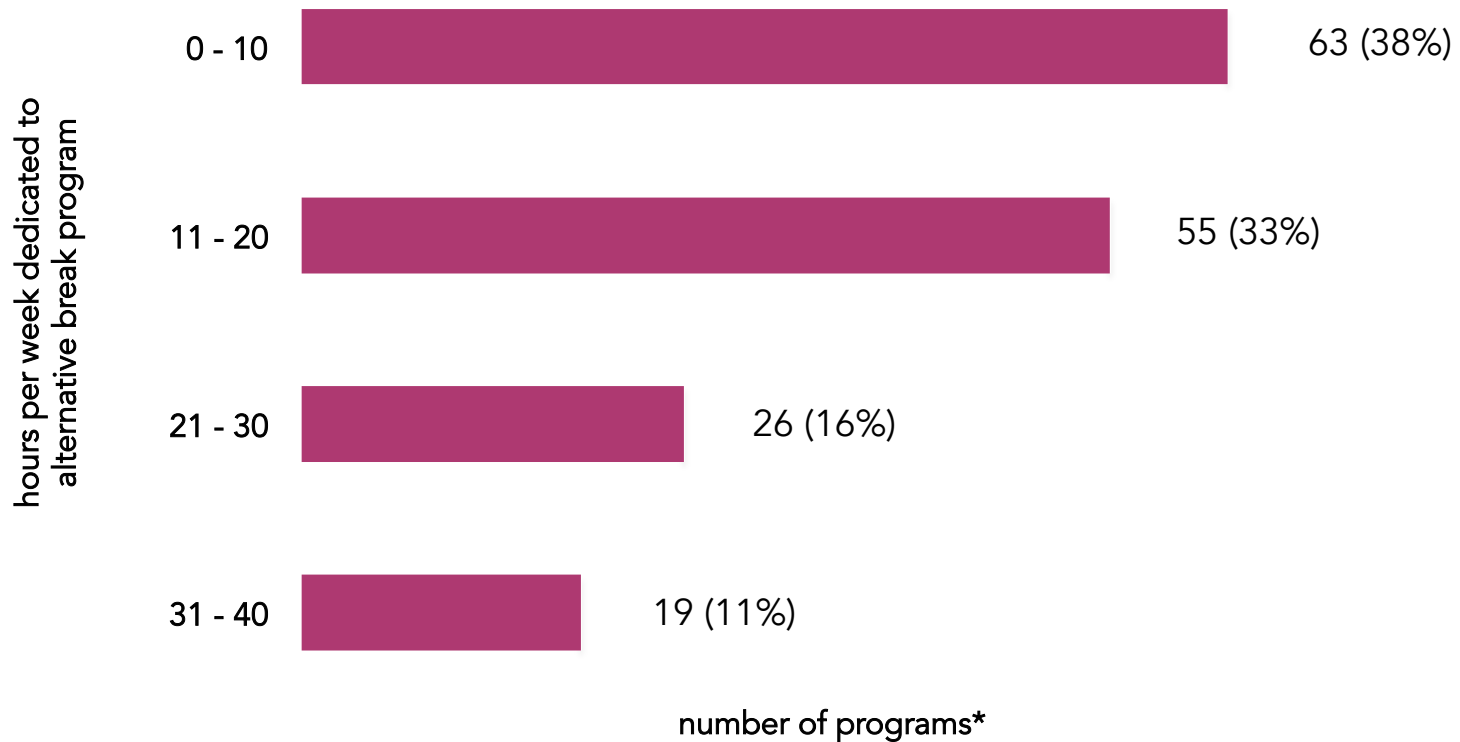
Yes	107 (64%)
Some trips, but not all	14 (8%)
Not required, but encouraged	9 (5%)
No	34 (21%)
No response	3 (2%)

\*University representative, daily phone call check-in with campus, faculty/staff partner for pre-trip meetings only

# staff + faculty

## program staff advisor time commitment

31 (19%) institutions have full-time staff position exclusively for alternative breaks



\*4 (2%) programs reported no staff advisor

# alternative break housing

## housing partnerships

programs using each housing type  
*select all that apply*

On-site volunteer housing provided by community organization	122 (73%)
Religious/Spiritual building	109 (65%)
Community Center (YMCA, city rec center, etc.)	70 (42%)
Hostel	54 (32%)
Hotel	50 (30%)
Airbnb, VRBO, or other home rental service	45 (27%)
Campground	39 (23%)
Homestays ( <i>not</i> family, friends, alumni)	19 (11%)
Private Homes (family, friends, alumni)	14 (8%)
Other	6 (4%)

3,316  
site leaders

657

student executive  
board members

# student leadership

by *program* and *trip*

## program student led?

Yes, completely. 19 (11%)

For the most part. We have staff who serve certain roles, but it's mostly student-led. 64 (39%)

Split pretty evenly between student and staff leadership. 41 (24%)

Almost completely staff-led. 43 (26%)

## trips student led?

Yes, completely. 59 (36%)

For the most part. We have staff who serve certain roles, but it's mostly student-led. 72 (43%)

Split pretty evenly between student and staff leadership. 19 (11%)

Almost completely staff-led. 17 (10%)

# alternative break finances

## average trip costs

trips	institutions	advertised price	true cost
Domestic Driving	152	\$244	\$411
Domestic Flying	80	\$495	\$814
International	74	\$1,310	\$1,801



# alternative break finances

## source of program funding

percent of total funding

Participant fees (out-of-pocket deposits due with application)	42%
Office budget (granted through the center that houses the program)	26%
Student government	10%
Participant fundraising (program events, campaigns)	12%
University administration (Office of the President, etc.)	3%
Grants	2%
Other	4%
University endowment	1%
Corporate donations	.4%
Local businesses	.3%

*\*159 programs reported*

# largest programs

school	participants	# of trips
University of Missouri - Columbia	1,860	167
The Ohio State University	947	88
University of Connecticut	772	16
University of Notre Dame	685	64
Central Michigan University	590	45
James Madison University	583	42
University of Delaware	538	34
University of Maryland, College Park	497	25
Vanderbilt University	483	37
University of Georgia	436	34

# most breakers on campus

school	participants
Wartburg College	14.1%
Northeastern University	13.8%
Buena Vista University	10.6%
Rollins College	10%
University of Notre Dame	9.6%
St. Norbert College	9.4%
Vanderbilt University	8.5%
Alma College	8.3%
University of Missouri - Columbia	7.9%
Stonehill College	7.6%

# THANK YOU

## to all participating institutions

Agnes Scott College	Coastal Carolina University	Florida State University	Keene State College	Northeastern University
Alma College	College of Charleston	Fresno State University	La Salle University	Northern Illinois University
Alvernia University	College of William & Mary	George Mason University	Lafayette College	Northwestern University
American University	Community College of Baltimore County (CCBC)	Georgia State University	Lasell College	Nova Southeastern University
Appalachian State University	Cornell College	Gettysburg College	Lehigh University	Oglethorpe University
Auburn University	Dalton State College	Grand Valley State University	Linfield College	Old Dominion University
Baldwin Wallace University	Davenport University	Grinnell College	Lone Star College	Oregon State University
Ball State University	Davidson College	Hamline University	Loyola Marymount University	Penn State - University Park
Bellarmino University	Denison University	Henderson State University	Marietta College	Princeton University
Boise State University	Drexel University	Hood College	Metropolitan State University of Denver	Ramapo College of New Jersey
Bowdoin College	East Carolina University	Howard Community College	Michigan State University	Rice University
Bowling Green State University (BGSU)	East Tennessee State University	Illinois State University	Middlebury College	Robert Morris University
Bradley University	Eastern Kentucky University	Indiana University – Purdue University Indianapolis (IUPUI)	Missouri State University	Rollins College
Bridgewater State University	Eastern Michigan University	James Madison University	Missouri University of Science and Technology	Rowan University
Buena Vista University	Elon University	Johns Hopkins University	Massachusetts Institute of Technology (MIT)	Rutgers University - New Brunswick
California State University-San Bernardino	Emory University	Johnson & Wales University - Providence Campus	Mount Ida College	Saginaw Valley State University
Case Western Reserve University	Florida Atlantic University	Johnson State College	Nazareth College	Salt Lake Community College
Central Michigan University	Florida International University	Kansas State University	New York University	

# THANK YOU

## to all participating institutions

Sonoma State University  
Southern Illinois University  
Edwardsville  
Southern Methodist  
University  
Southern New Hampshire  
University  
Southern Oregon University  
Southern Utah University  
Southwestern University  
Spelman College  
St. Norbert College  
Stanford University  
Stetson University  
Stevenson University  
Stonehill College  
SUNY Buffalo State College  
Temple University  
Texas State University  
Texas Tech University

The George Washington  
University  
The Ohio State University  
The University of Akron  
The University of Alabama  
The University of North  
Carolina at Greensboro  
The University of Utah  
Towson University  
Transylvania University  
Tulane University  
University of Alabama at  
Birmingham  
University at Buffalo  
University of California San  
Diego  
University of Central Florida  
University of Central  
Oklahoma  
University of Colorado  
Boulder

University of Colorado  
Denver  
University of Connecticut  
University of Delaware  
University of Georgia  
University of Houston  
University of Idaho  
University of Iowa  
University of Kentucky  
University of Louisville  
University of Maine  
University of Maryland  
University of Miami  
University of Michigan - Ann  
Arbor  
University of Missouri -  
Columbia  
University of North Alabama  
University of North Texas  
University of Northern  
Colorado

University of Notre Dame  
University of Pennsylvania  
University of Rhode Island  
University of South Carolina  
Aiken  
University of South Florida  
University of South Florida  
St. Petersburg  
University of Tampa  
University of Texas at Dallas  
University of Vermont  
University of Washington  
Tacoma  
University of Wisconsin -  
Stevens Point  
University of Wyoming  
University of Florida  
University of Las Vegas,  
Nevada  
University of Texas at Austin  
Utah State University

Utah Valley University  
Vanderbilt University  
Virginia Tech  
Wartburg College  
Washington State University  
Weber State University  
Wellesley College  
West Chester University of  
Pennsylvania  
Whitworth University  
Wichita State University  
Widener University  
Wilkes University  
Xavier University



**We appreciate your participation in the national survey.**

Thank you for your dedication to the Movement.