

National Chapter Survey Results

2016-2017

snapshot of the Movement

reporting institutions

total survey respondents: 167 (80% of Break Away chapters with programs)

attributes

Public	101 (60%)
Private	66 (40%)
Liberal arts	54 (32%)
Research	52 (31%)
Four-year	162 (97%)
Two-year	5 (3%)

affiliations

Multi-Campus	28 (17%)
Religious	19 (11%)
Other*	12 (7%)

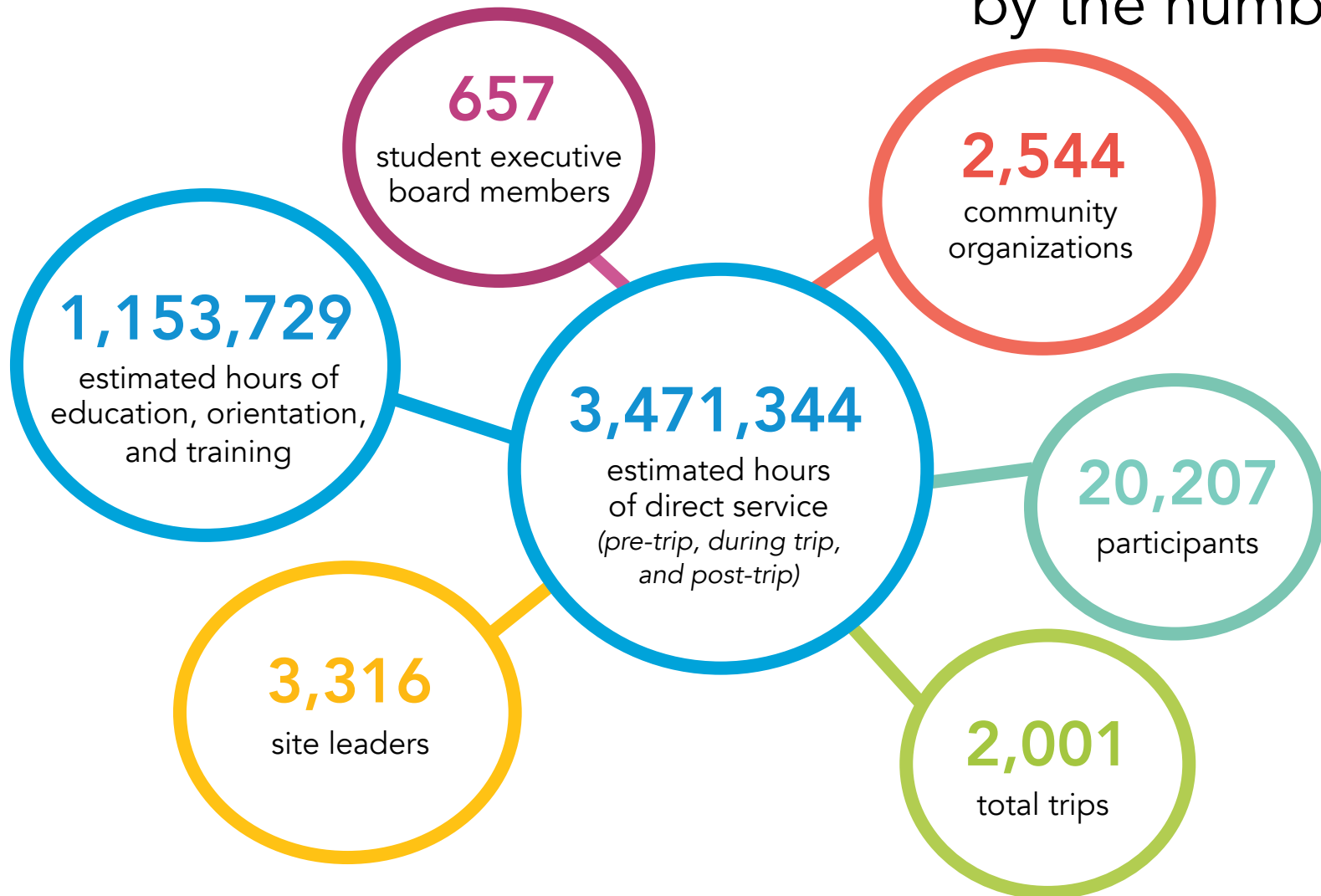
Break Away membership

Advantage	85 (51%)
Associate	82 (49%)

*HBCU, HIS, AANAPISI, MSI, Land Grant, Engineering, Majority Commuter, Women's Institution, Co-op

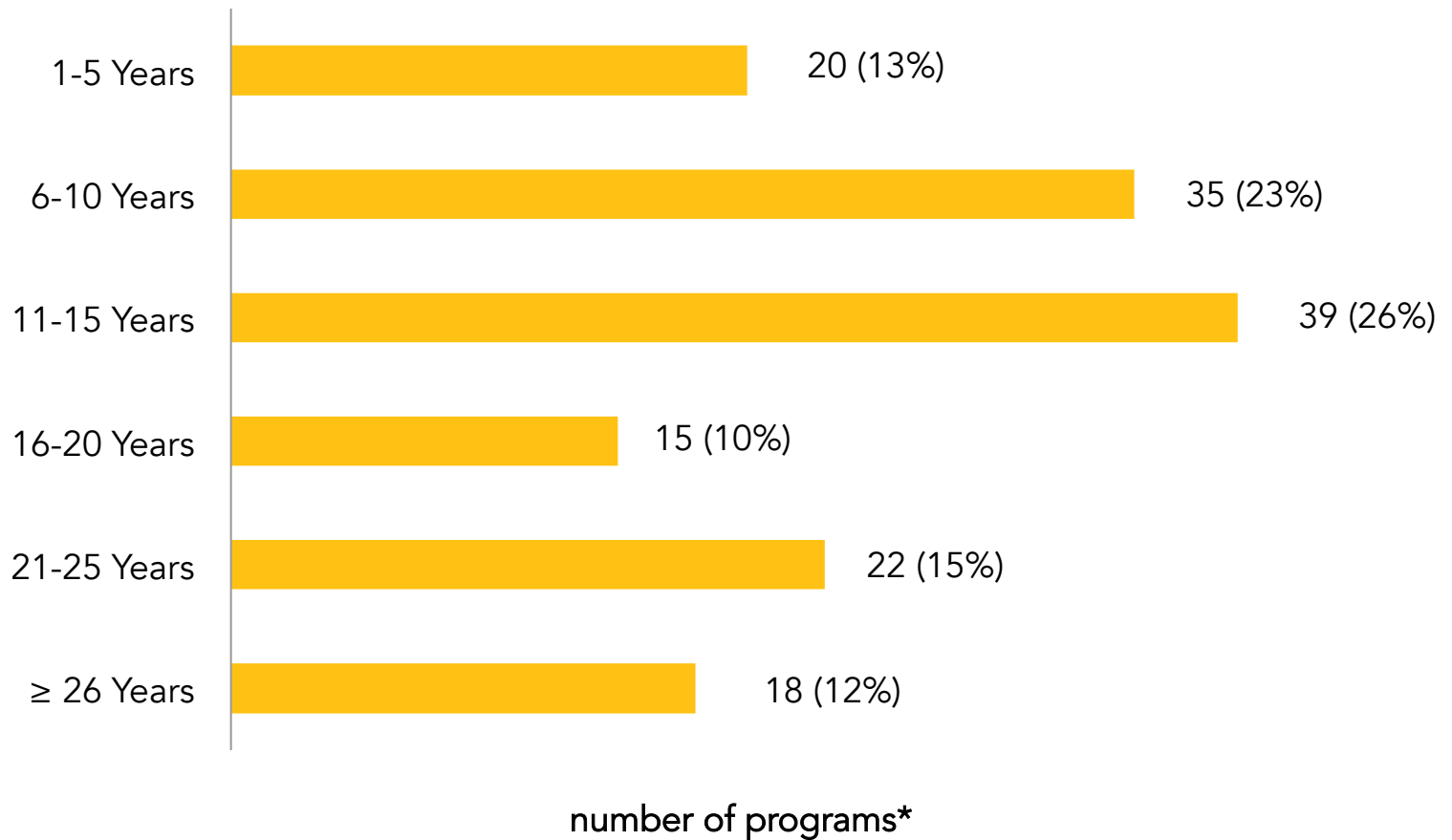
snapshot of the Movement

by the numbers



snapshot of the Movement

age of alternative break programs



*149 programs reported

snapshot of the Movement

number of trips by *season*

2,001

total trips

international | 205 trips (10%)

Spring | 96 trips

Summer | 45 trips

Fall | 1 trip

Winter | 63 trips

domestic | 1,796 trips (90%)

Spring | 1,027 trips

Summer | 95 trips

Fall | 185 trips

Winter | 314 trips

Weekend | 175 trips

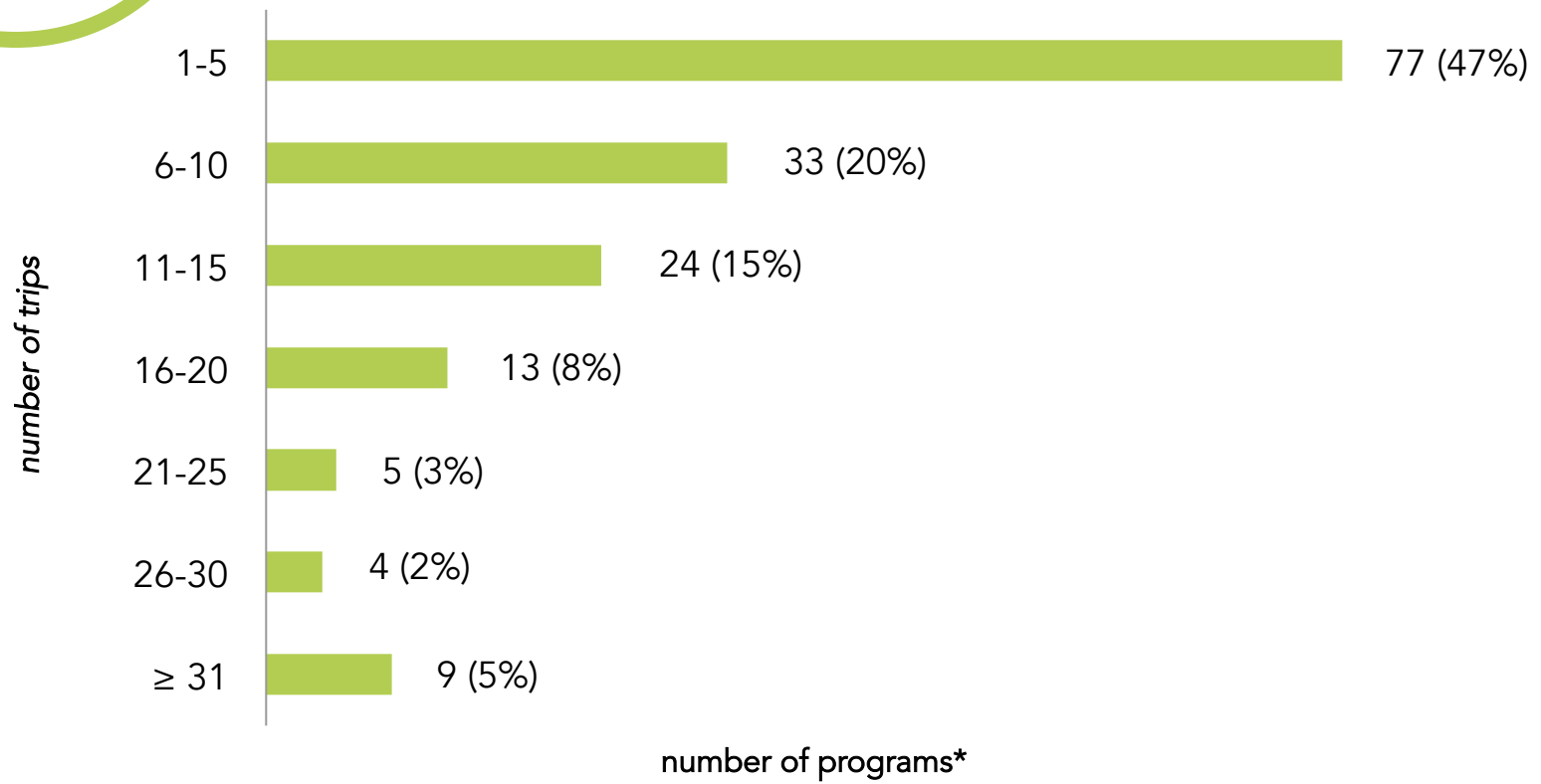
**165 programs reported*

snapshot of the Movement

number of trips by *program*

2,001

total trips



*165 programs reported

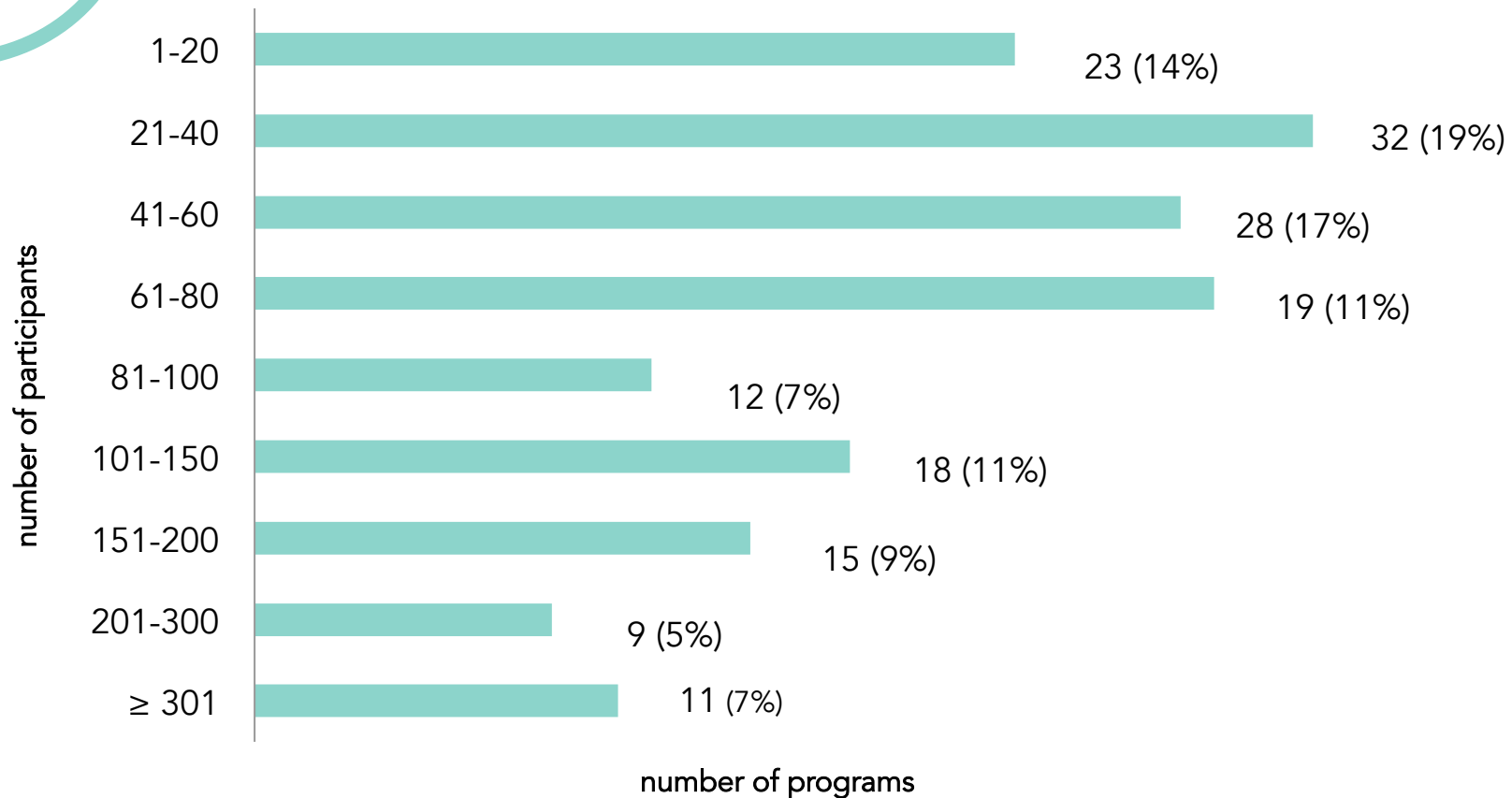
snapshot of the Movement

number of participants by *program*

20,207

participants

average number of participants per trip: 10

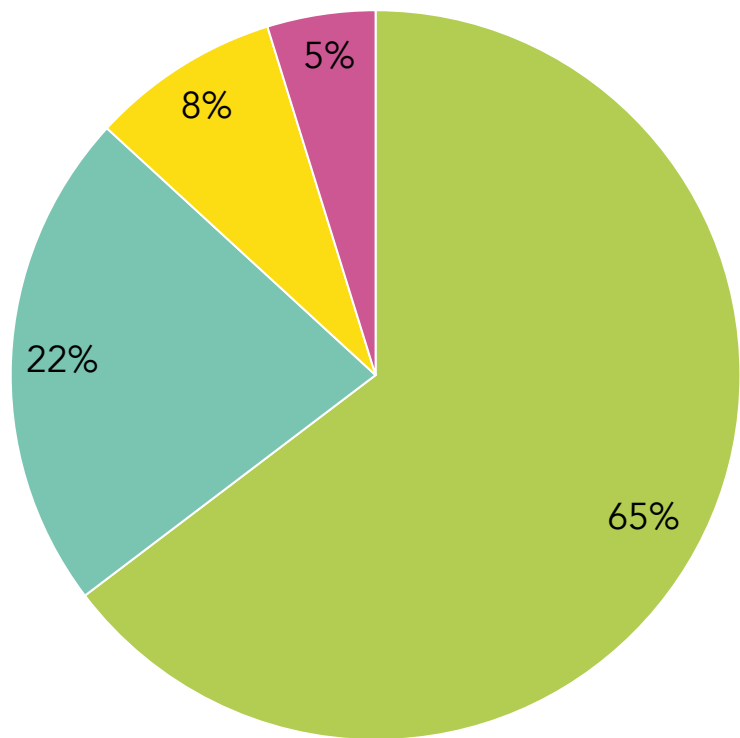


community partnerships

community organization relationships

returning community partnerships: 1,345 (53%)

2,544
community
organization partners



- Strive to work with a balance of "return" community organizations and new community organizations. (65%)
- Actively pursue long-term relationships with community organizations. (22%)
- Actively pursue new community organization relationships from year to year. (8%)
- No response. (5%)

trip focus areas

top ten

- 1 Environment
- 2 Housing & Homelessness
- 3 Education
- 4 Food & Hunger
- 5 Health (HIV/AIDS, mental health, addiction, public health)
- 6 Youth Development
- 7 Disaster Recovery & Rebuilding
- 8 Animal Welfare
- 9 Immigration & Refugee Resettlement
- 10 Community Organizing

trip focus areas

innovative trips + powerful titles

Gettysburg College

Black Lives Matter and the Civil Rights Movement

New York University

Charting Change: Conservation in the Face of Climate Change

University of Idaho

Cultivating Empathy and Embracing Diversity through Refugee Resettlement

Rice University

From Communities to Clinics: How Your Zip Code Determines Your Health

American University

Ghosts of War: Post-conflict Recovery Four Decades Later

Oregon State University

Native Voices: Exploring Cultural Engagement, Policy Issues, and Community Wellbeing

University of California, San Diego

Pride, Power, and Progress: LGBTQ Rights Beyond Marriage Equality

Baldwin Wallace University

Tangled Roots: History, Land Use, & Cultural Engagement

Hamline University

Then and Now: Queer & Trans Poverty, Gentrification, and Assimilation

student leadership

participant selection

20,207

participants

selections process

Application only	64 (38%)
Written application, personal interview	38 (23%)
Written application, group interview	11 (7%)
Written application, personal interview, group interview	6 (3%)
Sign up: first come, first served	14 (9%)
Lottery system	6 (3%)
Varies by program and/or trip	25 (15%)
No response	3 (2%)

111 (66%) programs offer full/partial scholarships to participants

faculty + staff role on trips
select all that apply

Crisis management/emergency: alcohol, personal safety	127 (76%)
Mentor/support for student leaders	106 (63%)
Van drivers	105 (63%)
Money handlers	103 (62%)
Full participants - no extra or special responsibilities	38 (23%)
Issue-specific educators	36 (22%)
Reflection facilitators	36 (22%)
Logistics/schedule managers	31 (19%)
Trip leaders (with or without the help of student co-leader)	28 (17%)
Other*	5 (3%)

staff + faculty

roles of trip advisors

are faculty and/or staff required on trips?

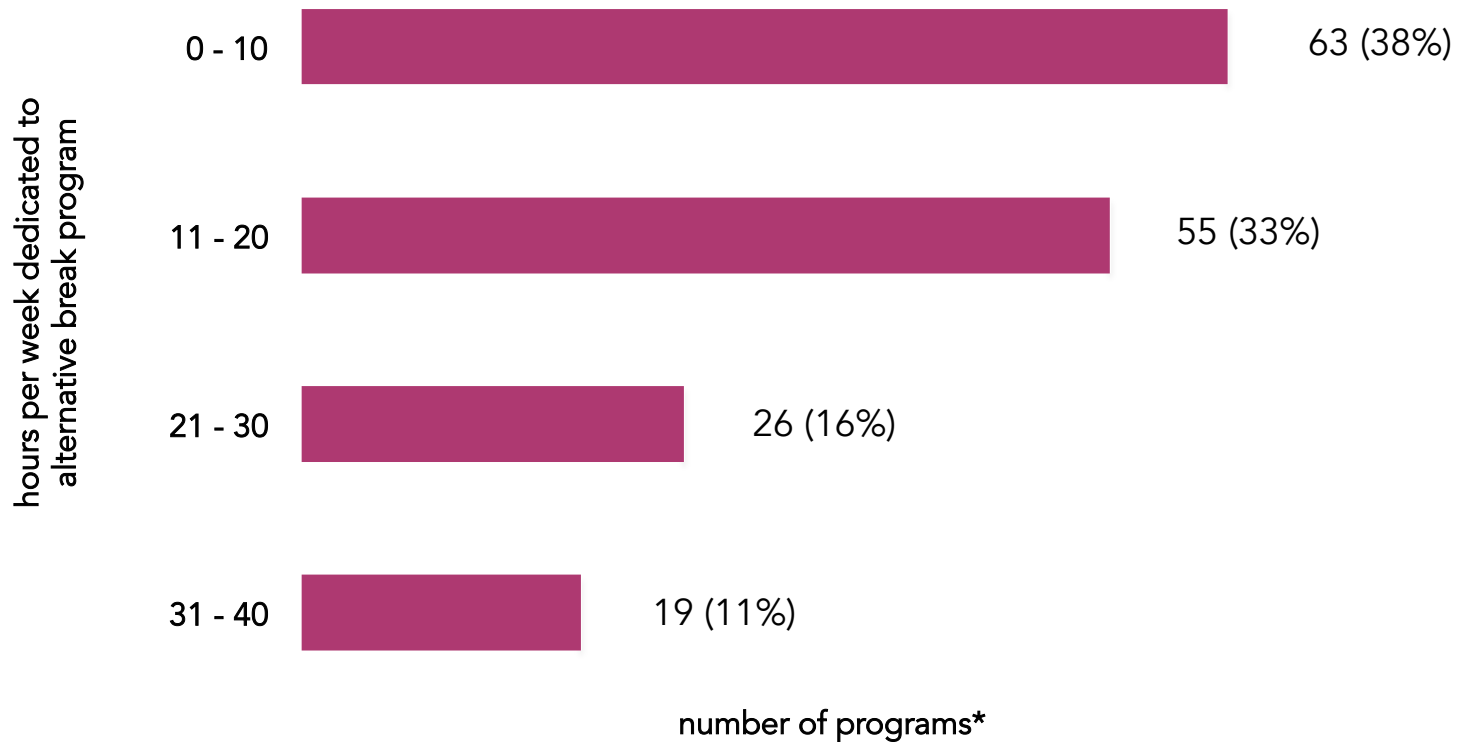
Yes	107 (64%)
Some trips, but not all	14 (8%)
Not required, but encouraged	9 (5%)
No	34 (21%)
No response	3 (2%)

*University representative, daily phone call check-in with campus, faculty/staff partner for pre-trip meetings only

staff + faculty

program staff advisor time commitment

31 (19%) institutions have full-time staff position exclusively for alternative breaks



*4 (2%) programs reported no staff advisor

alternative break housing

housing partnerships

programs using each housing type
select all that apply

On-site volunteer housing provided by community organization	122 (73%)
Religious/Spiritual building	109 (65%)
Community Center (YMCA, city rec center, etc.)	70 (42%)
Hostel	54 (32%)
Hotel	50 (30%)
Airbnb, VRBO, or other home rental service	45 (27%)
Campground	39 (23%)
Homestays (<i>not</i> family, friends, alumni)	19 (11%)
Private Homes (family, friends, alumni)	14 (8%)
Other	6 (4%)

3,316
site leaders

657

student executive
board members

student leadership

by program and trip

program student led?

Yes, completely. 19 (11%)

For the most part. We have staff who serve certain roles, but it's mostly student-led. 64 (39%)

Split pretty evenly between student and staff leadership. 41 (24%)

Almost completely staff-led. 43 (26%)

trips student led?

Yes, completely. 59 (36%)

For the most part. We have staff who serve certain roles, but it's mostly student-led. 72 (43%)

Split pretty evenly between student and staff leadership. 19 (11%)

Almost completely staff-led. 17 (10%)

alternative break finances

average trip costs

trips	institutions	advertised price	true cost
Domestic Driving	152	\$244	\$411
Domestic Flying	80	\$495	\$814
International	74	\$1,310	\$1,801

alternative break finances

source of program funding

percent of total funding

Participant fees (out-of-pocket deposits due with application)	42%
Office budget (granted through the center that houses the program)	26%
Student government	10%
Participant fundraising (program events, campaigns)	12%
University administration (Office of the President, etc.)	3%
Grants	2%
Other	4%
University endowment	1%
Corporate donations	.4%
Local businesses	.3%

**159 programs reported*

largest programs

school	participants	# of trips
University of Missouri - Columbia	1,860	167
The Ohio State University	947	88
University of Connecticut	772	16
University of Notre Dame	685	64
Central Michigan University	590	68
James Madison University	583	42
University of Delaware	538	34
University of Maryland, College Park	497	25
Vanderbilt University	483	37
University of Georgia	436	34

most breakers on campus

school	participants
Wartburg College	14.1%
Northeastern University	13.8%
Buena Vista University	10.6%
Rollins College	10%
University of Notre Dame	9.6%
St. Norbert College	9.4%
Vanderbilt University	8.5%
Alma College	8.3%
University of Missouri - Columbia	7.9%
Stonehill College	7.6%

THANK YOU

to all participating institutions

Agnes Scott College	Coastal Carolina University	Florida State University	Keene State College	Northeastern University
Alma College	College of Charleston	Fresno State University	La Salle University	Northern Illinois University
Alvernia University	College of William & Mary	George Mason University	Lafayette College	Northwestern University
American University	Community College of Baltimore County (CCBC)	Georgia State University	Lasell College	Nova Southeastern University
Appalachian State University	Cornell College	Gettysburg College	Lehigh University	Oglethorpe University
Auburn University	Dalton State College	Grand Valley State University	Linfield College	Old Dominion University
Baldwin Wallace University	Davenport University	Grinnell College	Lone Star College	Oregon State University
Ball State University	Davidson College	Hamline University	Loyola Marymount University	Penn State - University Park
Bellarmino University	Denison University	Henderson State University	Marietta College	Princeton University
Boise State University	Drexel University	Hood College	Metropolitan State University of Denver	Ramapo College of New Jersey
Bowdoin College	East Carolina University	Howard Community College	Michigan State University	Rice University
Bowling Green State University (BGSU)	East Tennessee State University	Illinois State University	Middlebury College	Robert Morris University
Bradley University	Eastern Kentucky University	Indiana University – Purdue University Indianapolis (IUPUI)	Missouri State University	Rollins College
Bridgewater State University	Eastern Michigan University	James Madison University	Missouri University of Science and Technology	Rowan University
Buena Vista University	Elon University	Johns Hopkins University	Massachusetts Institute of Technology (MIT)	Rutgers University - New Brunswick
California State University-San Bernardino	Emory University	Johnson & Wales University - Providence Campus	Mount Ida College	Saginaw Valley State University
Case Western Reserve University	Florida Atlantic University	Johnson State College	Nazareth College	Salt Lake Community College
Central Michigan University	Florida International University	Kansas State University	New York University	

THANK YOU

to all participating institutions

Sonoma State University
Southern Illinois University
Edwardsville
Southern Methodist
University
Southern New Hampshire
University
Southern Oregon University
Southern Utah University
Southwestern University
Spelman College
St. Norbert College
Stanford University
Stetson University
Stevenson University
Stonehill College
SUNY Buffalo State College
Temple University
Texas State University
Texas Tech University

The George Washington
University
The Ohio State University
The University of Akron
The University of Alabama
The University of North
Carolina at Greensboro
The University of Utah
Towson University
Transylvania University
Tulane University
University of Alabama at
Birmingham
University at Buffalo
University of California San
Diego
University of Central Florida
University of Central
Oklahoma
University of Colorado
Boulder

University of Colorado
Denver
University of Connecticut
University of Delaware
University of Georgia
University of Houston
University of Idaho
University of Iowa
University of Kentucky
University of Louisville
University of Maine
University of Maryland
University of Miami
University of Michigan - Ann
Arbor
University of Missouri -
Columbia
University of North Alabama
University of North Texas
University of Northern
Colorado

University of Notre Dame
University of Pennsylvania
University of Rhode Island
University of South Carolina
Aiken
University of South Florida
University of South Florida
St. Petersburg
University of Tampa
University of Texas at Dallas
University of Vermont
University of Washington
Tacoma
University of Wisconsin -
Stevens Point
University of Wyoming
University of Florida
University of Las Vegas,
Nevada
University of Texas at Austin
Utah State University

Utah Valley University
Vanderbilt University
Virginia Tech
Wartburg College
Washington State University
Weber State University
Wellesley College
West Chester University of
Pennsylvania
Whitworth University
Wichita State University
Widener University
Wilkes University
Xavier University



We appreciate your participation in the national survey.

Thank you for your dedication to the Movement.