

National Alternative Break Survey

2017-2018

snapshot of the Movement

reporting institutions

total survey respondents:
195 alternative break programs,
representing 193 schools

Break Away membership

Chapters	95% (183)
non-Chapters	5% (10)

attributes

public	124 (65%)
private	69 (35%)
liberal arts	59 (31%)
research	70 (36%)
four-year	185 (96%)
two-year	8 (4%)

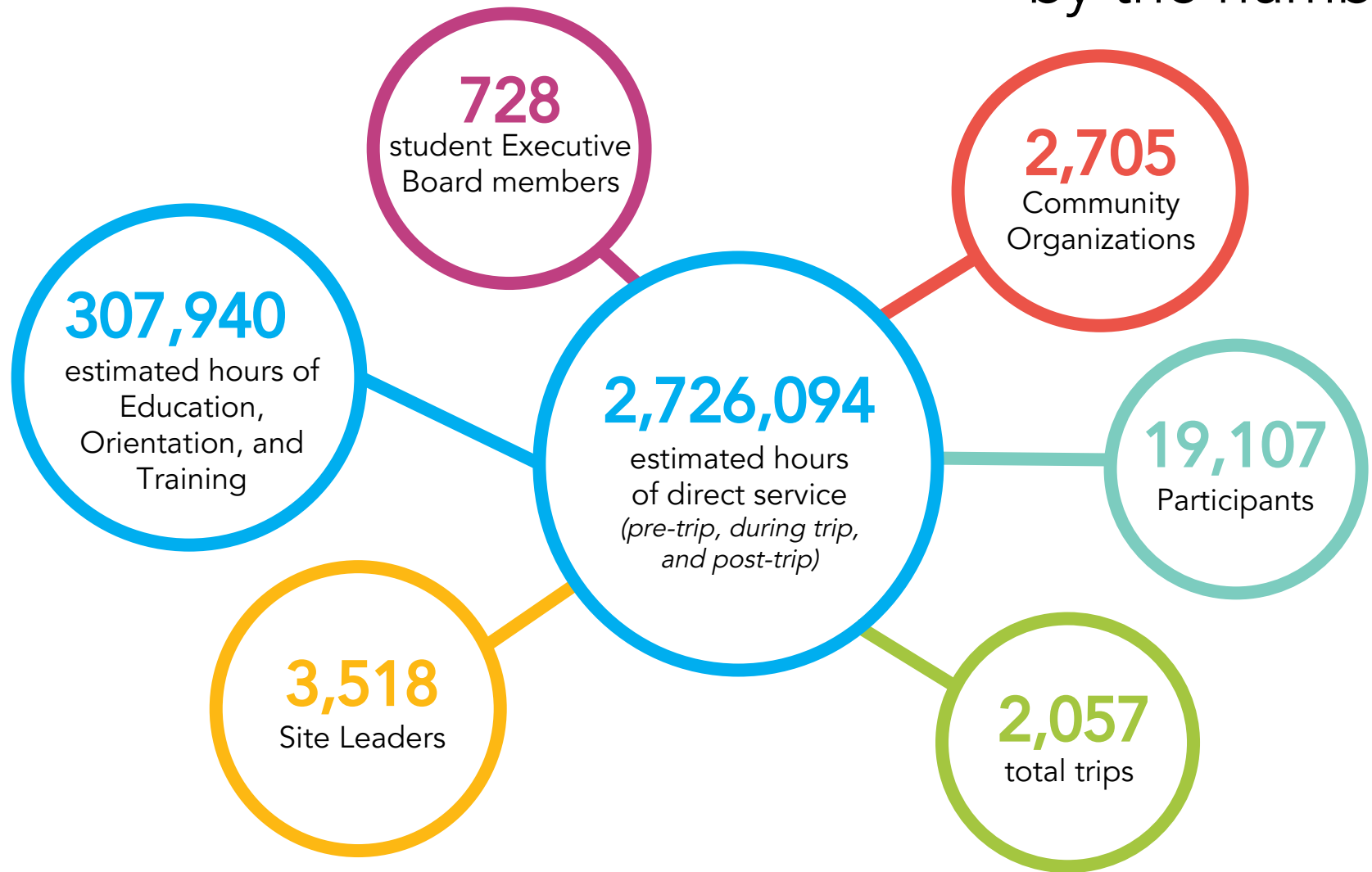
affiliations

multi-campus	19% (37)
religiously affiliated	10% (19)
Hispanic Serving Institution (HSI)	6% (12)
other*	3% (6)

**HBCU, AANAPISI, or women's institution*

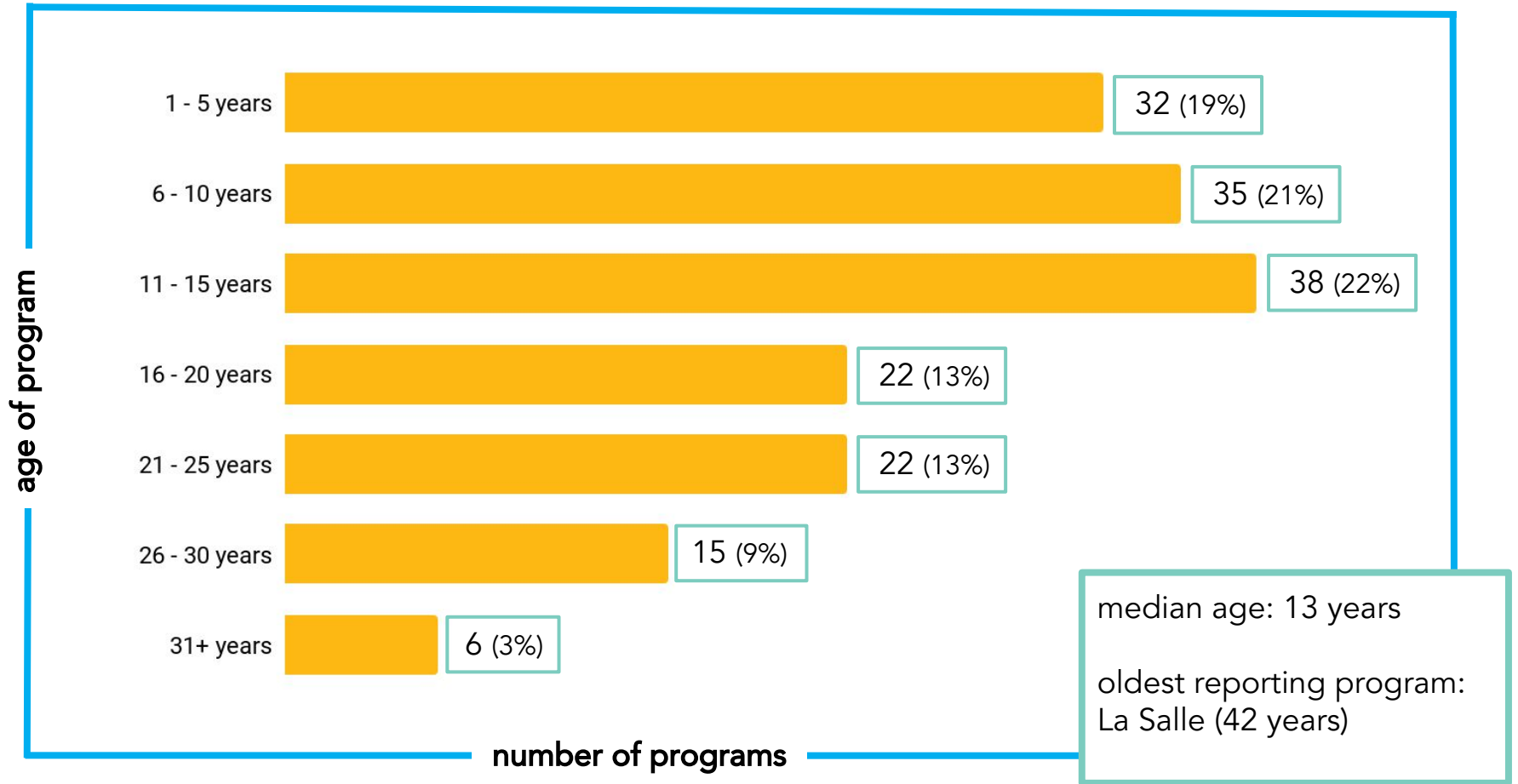
snapshot of the Movement

by the numbers



snapshot of the Movement

age of alternative break programs



**170 programs reporting*

2,057
total trips

snapshot of the Movement

number of trips by *season*

international

223 trips (11%)

105 trips (47%)

64 trips (29%)

4 trips (2%)

49 trips (22%)

domestic

1,834 trips (89%)

1,030 trips (56%)

99 trips (5%)

160 trips (9%)

290 trips (16%)

259 trips (14%)

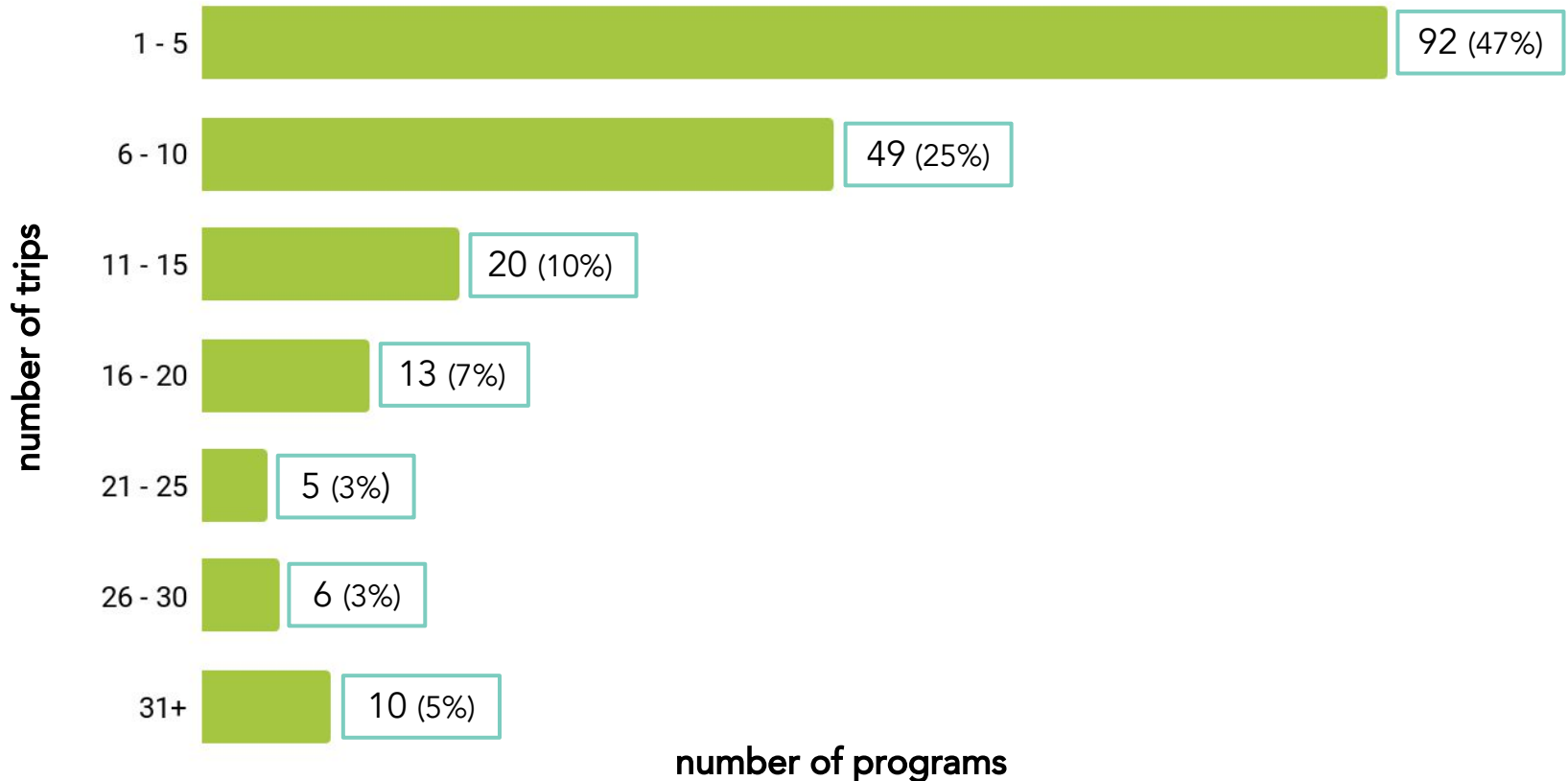
spring
summer
fall
winter
weekend

1 international trip listed as "other"

2,057
total trips

snapshot of the Movement

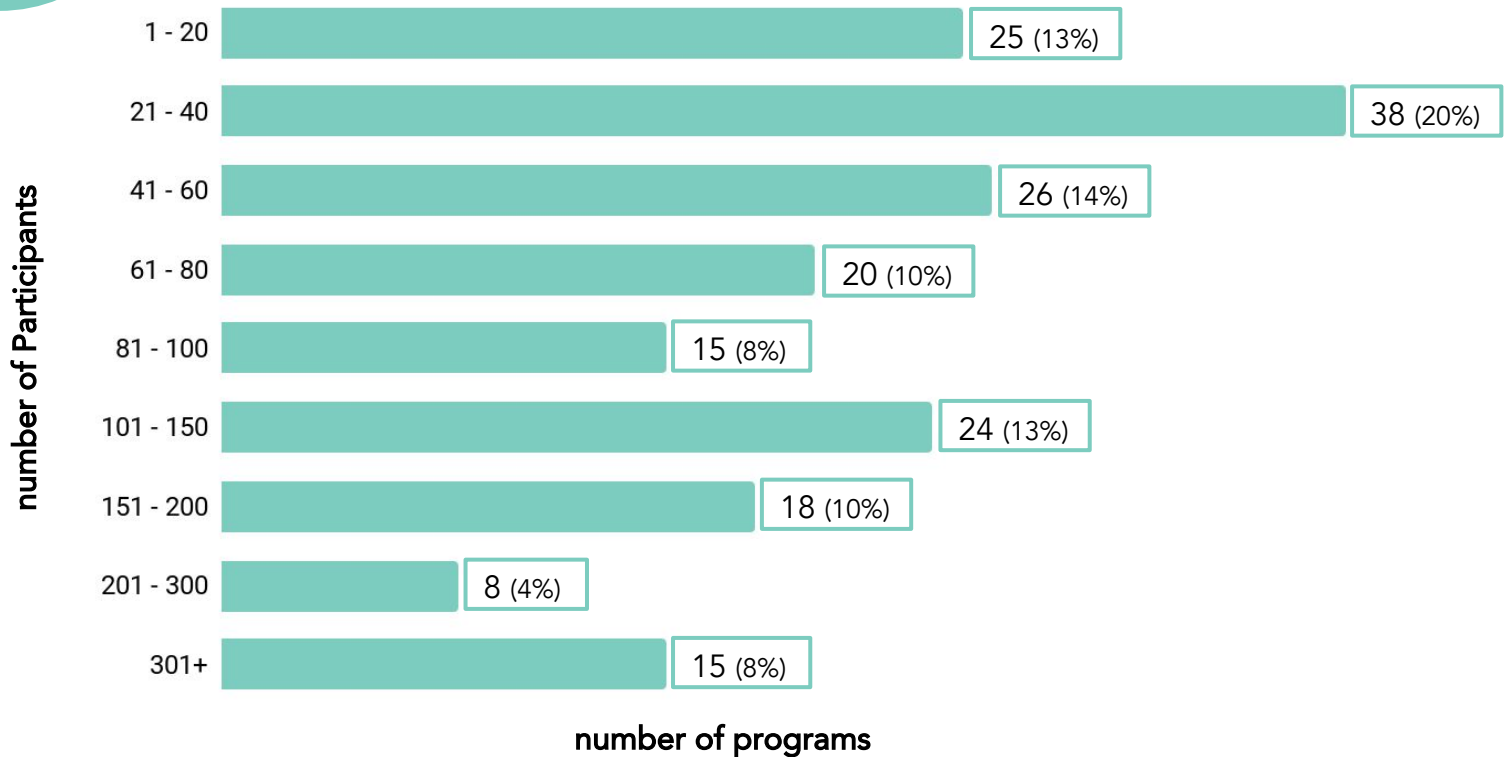
number of trips by *program*



19,107
Participants

snapshot of the Movement

number of Participants by *program*



**189 programs reporting*

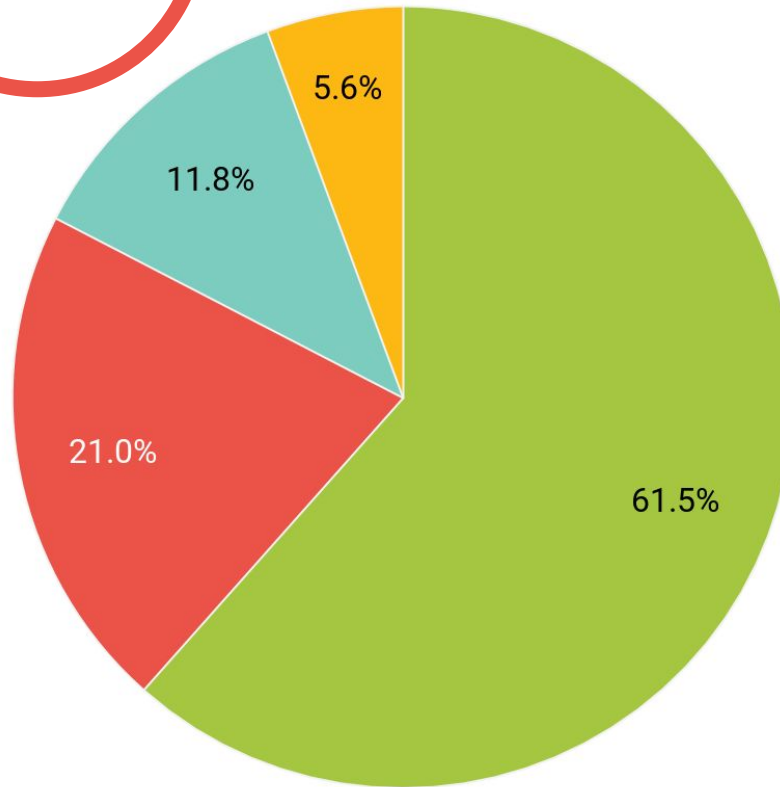
average number of Participants per trip: 9.4
compared to 10.56 in 2016-2017

community partnerships

Community Organization relationships

2,705

Community Organizations



- we strive to work with a balance of "return" Community Organizations (61.5%)
- we actively pursue long-term relationships with Community Organizations (21%)
- we actively pursue new Community Organization relationships from year to year (11.8%)
- no response (5.6%)

returning community partnerships: 1,355 (50%)
average of 1.7 Community Organizations per trip

community partnerships

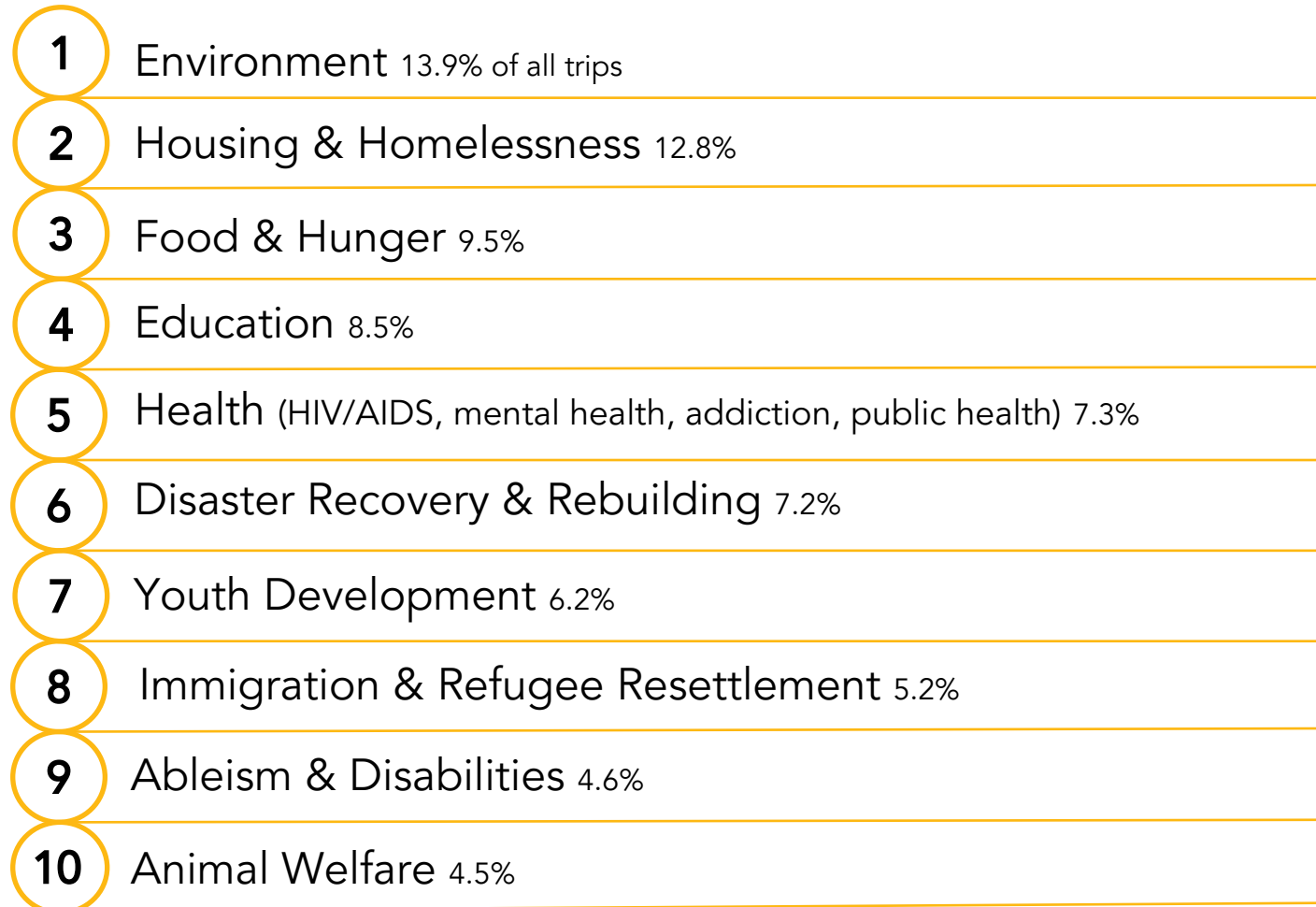
housing partnerships

percentage of programs using each housing type	
on-site volunteer housing provided by Community Organizations	142 (77%)
religious/spiritual building	120 (65%)
community center (YMCA, city rec center, etc.)	77 (42%)
hostel	65 (35%)
hotel	60 (32%)
campground	48 (26%)
homestays (<i>not</i> family, friends, alumni)	26 (14%)
home rental services (Airbnb, VRBO, etc.)	47 (25%)
private homes (family, friends, alumni)	15 (8%)
other	8 (4%)

*185 programs reporting

trip focus areas

top ten



trip focus areas

innovative trips + powerful titles

University of California, Los Angeles

Exploring a Model Green City: Sustainable Development

Florida State University

Digging Deeper: Investigating Food Sustainability as a Public Health Issue

Eastern Michigan University

Committing to Healthier Communities through Restorative Housing

Baldwin Wallace University

Strength through Support: Suicide Prevention and Awareness

West Chester University of Pennsylvania

Advocating for Women's Rights through Political Engagement

Oregon State University

Native Voices: Exploring Cultural Engagement, Policy Issues & Community Wellbeing

Southwestern University

Navigating Rough Waters: Refugee Resettlement in the Wake of Disaster

Agnes Scott College

An Elephant Never Forgets: Colonialism, Environmental Justice, and Animal Rights

Rice University

Shifting Tides: Exploring How Environmental Advocacy and Policy Promote Water Justice

student leadership

Participant selection

19,107
Participants

selections process

written application only	62 (36%)
sign up: first come, first served	52 (31%)
written application + personal interview	23 (14%)
written application + group interview	11 (6%)
lottery system	11 (6%)
written application + personal & group interviews	7 (4%)
group OR personal interview only	5 (3%)

**171 programs reporting*

70% of programs offer full/partial scholarships to Participants

student leadership

by *program* and *trip*

3,518

Site Leaders

728

student Executive
Board members

is the program student-led?

yes, completely 21 (11%)

for the most part. we have staff who
serve certain roles, but it's mostly
student-led 68 (35%)

split pretty evenly between student and
staff leadership 55 (28%)

almost completely staff-led 51 (26%)

are trips student-led?

yes, completely 59 (30%)

for the most part. we have staff who
serve certain roles, but it's mostly
student-led 89 (46%)

split pretty evenly between student and
staff leadership 20 (10%)

almost completely staff-led 27 (14%)

student leadership

Executive Board

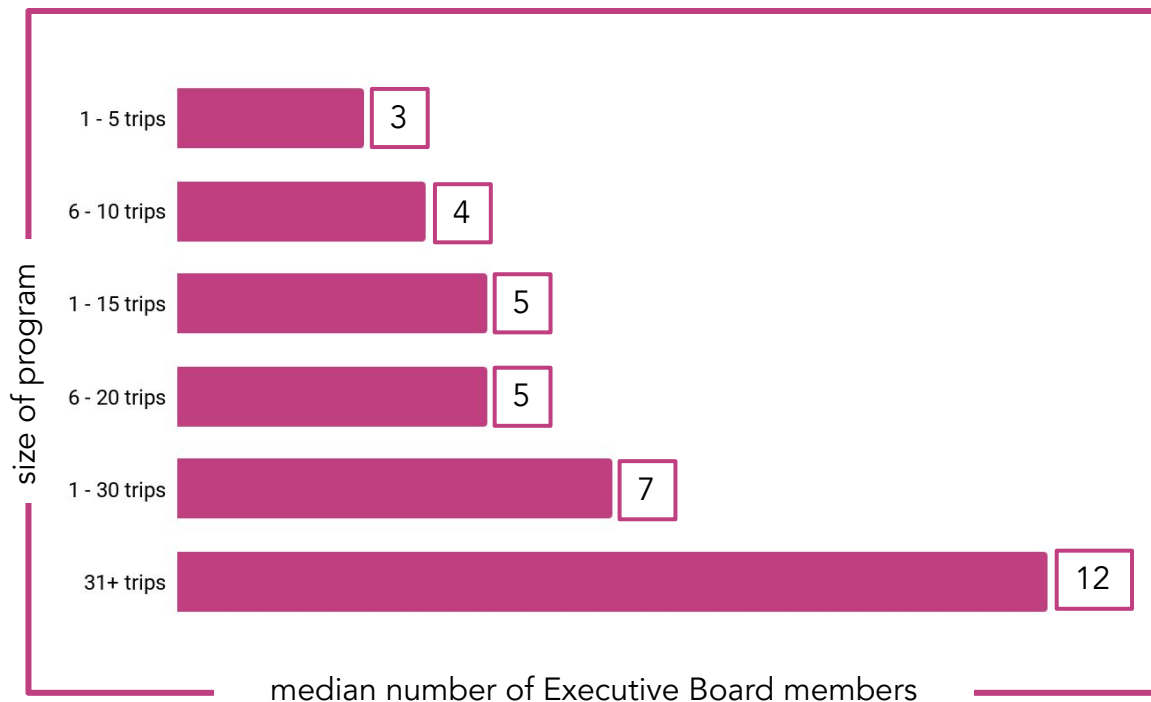
728

student Executive Board members

Executive Board compensation

percentage of programs

paid hourly	36%
receive a stipend	11%
trip fees are fully or partially covered by the program	41%
they are volunteers	51%



59% of programs have an Executive Board
average number of Exec Board members: 6.4

faculty + staff

roles of Trip Advisors

are faculty and/or staff required on trips?

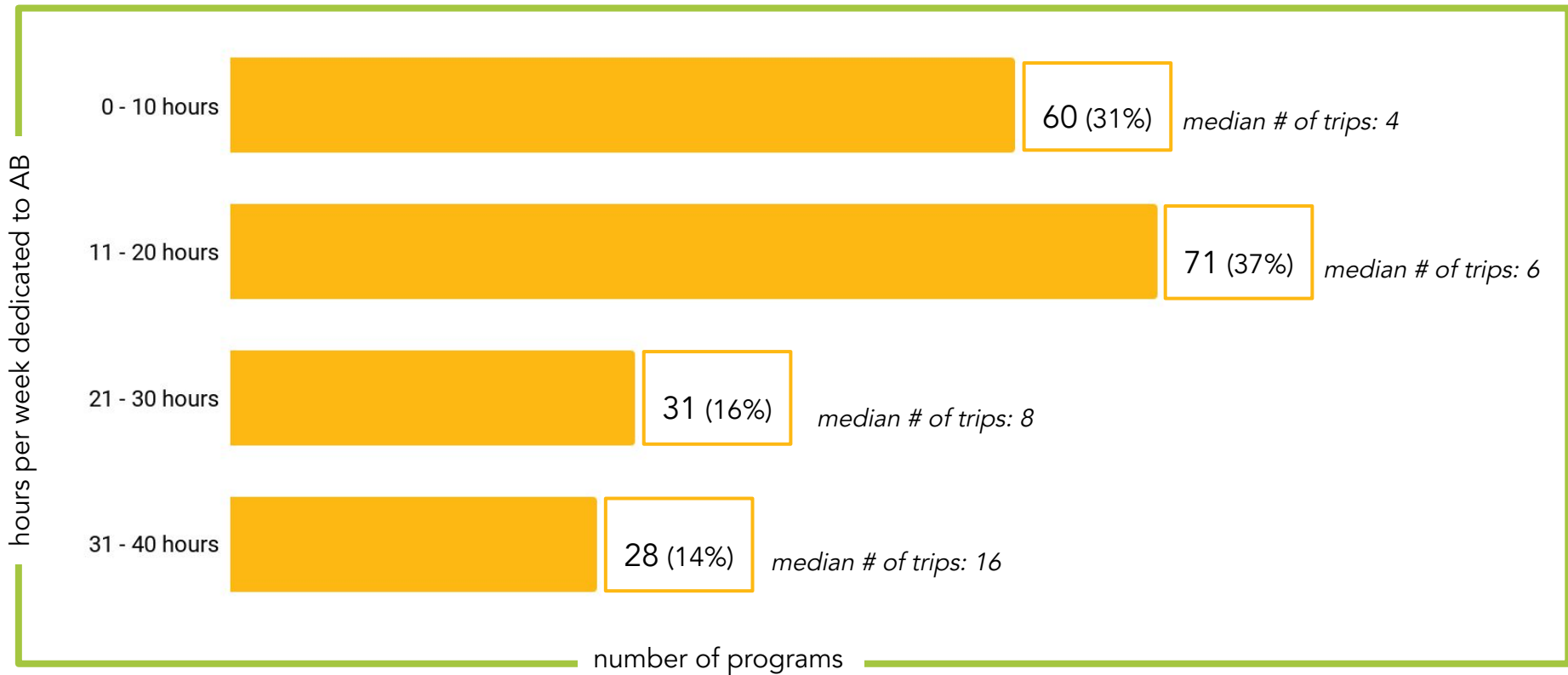
yes	125 (64%)
some trips, but not all	14 (7%)
not required, but encouraged	11 (6%)
no	36 (18%)
no response	9 (5%)

faculty + staff role on trips

risk managers/emergency contacts	143 (73%)
mentor/support for student leaders	130 (67%)
van drivers	123 (63%)
money handlers	113 (58%)
issue-specific educators	43 (37%)
full participants (no extra or special responsibilities)	51 (26%)
logistics/schedule managers	44 (22%)
reflection facilitators	38 (19%)
trip leaders (with or without the help of student co-leader)	37 (19%)

staff + faculty

Staff Advisor time commitment



4 programs (2%) reported having no Staff Advisor
*194 programs reporting

pre-trip preparation

average number of meetings or events participants are required to attend

	Pre-trip	Post-trip
weekend trips 1-4 days	2.2	.9
week-long trips 5+ days	5.3	1.6

programs incorporating diversity and social justice curriculum
by training type

pre-trip curriculum	93 (50%)
site leader training	92 (49%)
program-wide training or event	62 (33%)
none of the above	37 (20%)

*187 programs reporting

innovations across campus

top partners:

1. student organizations
2. diversity/inclusion office
3. leadership & scholarship programs
4. academic departments
5. campus ministry

number of programs offering academic credit for:

curriculum-based alternative breaks	12 (6%)
Site Leader training	17 (9%)
program participation	15 (8%)

**187 programs reporting*

53% of programs are engaging in cross-campus partnerships

alternative break finances

average trip costs

2017-2018:*

trips	advertised price	true cost
domestic driving	\$236	\$357
domestic flying	\$521	\$838
international	\$1,395	\$1,772

*178 programs reporting

compared to 2016-2017:

trips	advertised price	true cost
domestic driving	no change	4% increase
domestic flying	10% increase	20% increase
international	14% increase	13% increase

alternative break finances

source of program funding

percent of total trip funding	
participant fees (out-of-pocket deposits due with application)	40.8% ↑
office budget (granted through the center that houses the program)	28% ↑
participant fundraising (program events, campaigns)	12.5% ↑
student government	10.3% ↓
other	3.3% ↑
university administration (office of the president, etc.)	2.2% ↓
grants	1.5% ↓
university endowment	1%
corporate donations	0.2% ↓
local businesses	0.3%

↓↑ indicates an increase or decrease in percentage of total funding, compared to 2016-2017 data

largest programs

School	Participants	# Trips
University of Missouri - Columbia	1,395	167
The Ohio State University	877	87
Central Michigan University	752	68
University of Connecticut	694	30
University of Delaware (UDaB)	543	31
Virginia Tech	482	60
James Madison University	437	55
University of Maryland, College Park	363	33
University of Kansas	354	63
Florida International University	334	48

percentage of breakers on campus

School	Participants
Rollins College	12.9%
Wartburg College	12.2%
Alma College	11.4%
St. Norbert College	7.35%
University of Missouri	7.3%
Stonehill College	6.5%
La Salle University	5.93%
Villanova University	5.91%
Xavier University	5.5%
Bowdoin College	5.3%

THANK YOU

to all participating institutions

Agnes Scott College
Aims Community College
Alma College
American University
Anna Maria College
Appalachian State University
Auburn University
Baldwin Wallace University
Ball State University
Bellarmine University
Boise State University
Boston University
Bowling Green State University
Bridgewater State University
Buena Vista University
Cal Poly State University, San Luis
Obispo
Carleton College
Case Western Reserve University
Cedar Crest College
Central Michigan University
Charleston Southern University
Clemson University
Cleveland State University
Coastal Carolina University
College of Charleston
College of William & Mary
Cornell College

Dalton State College
Davenport University
Davidson College
Denison University
Dixie State University
Drury University
East Carolina University
East Tennessee State University
Eastern Michigan University
Elon University
Emory University
Flagler College
Florida Atlantic University
Florida International University
Florida State University
Fort Hays State University
Franklin & Marshall College
Furman University
George Mason University
Georgia Southern University
Georgia State University
Gettysburg College
Grand Valley State University
Grinnell College
Hamline University
Harford Community College
Henderson State University
Hood College

Howard Community College
Illinois State University
Iowa State University
James Madison University
Johnson & Wales University
Providence
Johnson State College
Kansas State University
Keene State College
Kennesaw State University
La Salle University
Lafayette College
Lasell College
Lehigh University
Lehman College, CUNY
Linfield College
Lock Haven University
Loyola Marymount University
Marietta College
Massachusetts Institute of Technology
Merrimack College
Metropolitan State University of
Denver
Michigan State University
Middlebury College
Mills College
Missouri State University
Missouri University of Science and
Technology

Mitchell College
Mulenberg College
Nazareth College
New York University
Northern Illinois University
Northeastern Illinois University
Northeastern University
Northwest Missouri State University
Northwestern University
Nova Southeastern University
Old Dominion University
Oregon State University
Oxford College of Emory University
Pennsylvania State University
Rice University
Roanoke College
Rollins College
Rutgers University-New Brunswick
Saginaw Valley State University
Salt Lake City Community College
Southern Methodist University
Southern New Hampshire University
Southern Oregon University
Southern Utah University
Southwestern University
Spelman College
St. Norbert College
Stetson University
Stevenson University

THANK YOU

to all participating institutions

Stonehill College
SUNY New Paltz
SUNY Buffalo State College
Temple University
Texas Tech University
Texas Woman's University
The George Washington University
The Ohio State University
The University of Alabama at Birmingham
The University of Tennessee, Knoxville
The University of Texas at Austin
University of Maine
University of Maryland, College Park
The University of Utah
Towson University
University at Buffalo
University of Arizona
University of Arkansas - Fort Smith
University of Bridgeport
University of California, Los Angeles
University of California, San Diego
University of Central Florida
University of Central Oklahoma
University of Colorado Boulder
University of Colorado Denver

University of Connecticut
University of Delaware, UDaB
University of Delaware, BHLB
University of Delaware, RHLAB
University of Florida
University of Georgia
University of Iowa
University of Kansas
University of Kentucky
University of Louisville
University of Massachusetts Boston
University of Memphis
University of Miami
University of Michigan
University of Missouri
University of New Hampshire
University of Nevada, Las Vegas
University of North Alabama
University of North Carolina at Greensboro
University of North Florida
University of North Georgia
University of North Texas
University of Northern Colorado
University of Oregon
University of Pennsylvania

University of South Carolina
University of South Carolina Aiken
University of South Carolina Upstate
University of South Dakota
University of South Florida
Sarasota-Manatee
University of South Florida Tampa
University of St. Thomas
University of Tampa
University of Texas at Austin
University of Vermont
University of Washington Tacoma
University of Wisconsin-Madison
Utah State University
Utah Valley University
Villanova University
Virginia Commonwealth University
Virginia Tech
Wartburg College
Weber State University
West Chester University of Pennsylvania
Western Illinois University
Worcester Polytechnic University
Wichita State University
Widener University
Wilkes University
Xavier University

We appreciate your participation in the national survey.

Thank you for your dedication to the Movement.